

# Parkheath

*Sold on Service*

**Belsize Park NW3**  
**£1,450,000**

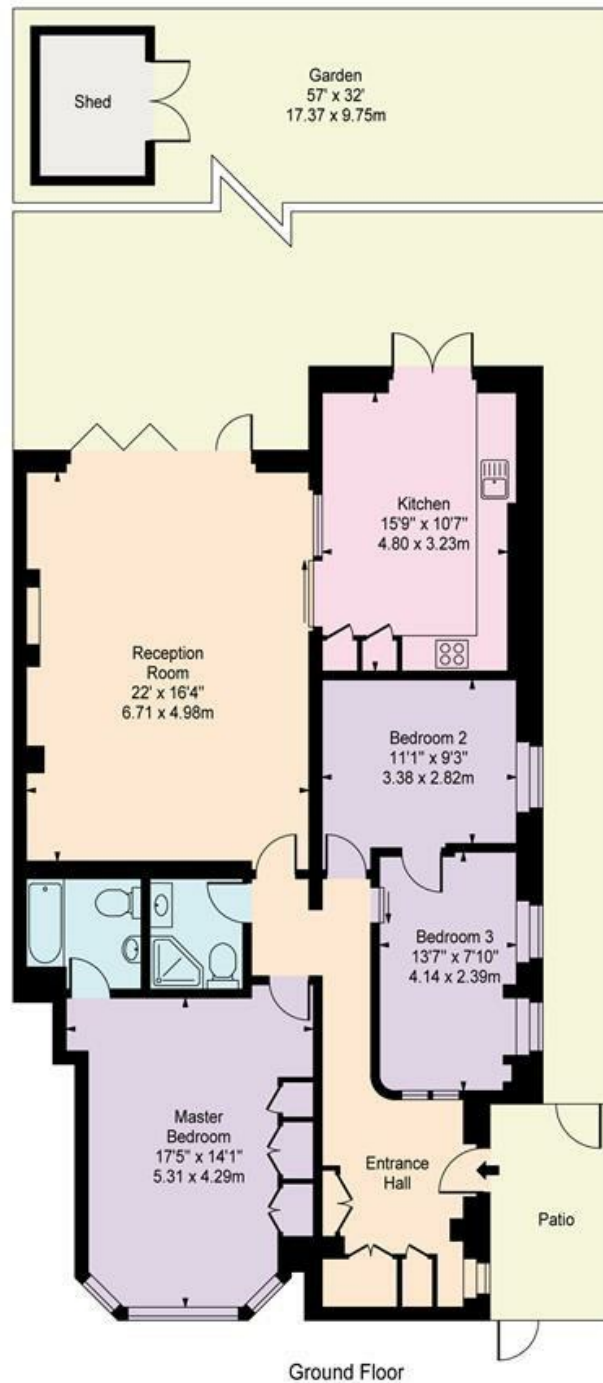


Well proportioned 3 Bedroom Garden Flat  
Entire lower floor  
Wood flooring, exposed brickwork  
Sole use of undemised 57' garden  
Excellent 15' kitchen/diner

Semi-detached white stucco fronted conversion  
1258 Sq Ft/116.87 Sq M  
Garden access from reception and kitchen  
Spacious 22' reception  
17' bedroom with en suite

Belsize Park Office 020 7431 3104

## Belsize Park, NW3



Approx Gross Internal Area    **1258 Sq Ft - 116.87 Sq M**

For Illustration Purposes Only - Not To Scale    Floor Plan by [www.nogaphotostudio.com](http://www.nogaphotostudio.com)    Ref: No.4994

This floor plan should be used as a general outline for guidance only. Any intending purchaser or lessee should satisfy themselves by inspection, searches, enquiries and full survey as to the correctness of each statement. Any areas, measurements or distances quoted are approximate and should not be used to value a property or be the basis of any sale or let.

The particulars do not constitute part of an offer or contract. The particulars, including text, photographs and plans, are for the guidance only of prospective purchasers/tenants and must not be relied upon as statements of fact. The descriptions provided therein represent the opinion of the author and whilst given in good faith should not be construed as statements of fact. Nothing in these particulars shall be deemed a statement that the property is in good condition or otherwise or that any services or facilities are in good working order. All measurements are approximate